

**SPIN-BLAST HD**  
**INTERNAL-PIPE BLAST TOOL**  
**O. M. 25119**

**MC FILE NUMBER:** 2336-0707  
**DATE OF ISSUE:** July, 2007  
**REVISION:** A, 07/09

**! WARNING**

**Do not proceed with these instructions\* until you have READ the orange cover of this MANUAL and YOU UNDERSTAND its contents.**

**These WARNINGS are included for the health and safety of the operator and those in the immediate vicinity.**

**\*If you are using a Clemco Distributor Maintenance and Part Guide, refer to the orange warnings insert preceding the Index before continuing with the enclosed instructions.**

**Electronic files include a Preface containing the same important information as the orange cover.**

© 2009 CLEMCO INDUSTRIES CORP.  
One Cable Car Dr.  
Washington, MO 63090  
Phone (636) 239-4300  
Fax (800) 726-7559  
Email: [info@clemcoindustries.com](mailto:info@clemcoindustries.com)  
[www.clemcoindustries.com](http://www.clemcoindustries.com)



**⚠ WARNING**

- Read and follow ALL instructions before using this equipment.
- Failure to comply with ALL instructions can result in serious injury or death.
- In the event that the user, or any assistants of the user of this equipment cannot read or cannot completely understand the warnings and information contained in these instructions, the employer of the user and his assistants must thoroughly educate and train them on the proper operation and safety procedures of this equipment.

**NOTICE TO PURCHASERS AND USERS OF OUR PRODUCTS AND THIS INFORMATIONAL MATERIAL**

The products described in this material, and the information relating to those products, is intended for knowledgeable, experienced users of abrasive blasting equipment.

No representation is intended or made as to the suitability of the products described herein for any particular purpose or application. No representations are intended or made as to the efficiency, production rate, or the useful life of the products described herein. Any estimate regarding production rates or production finishes are the responsibility of the user and must be derived solely from the user's experience and expertise, and must not be based on information in this material.

The products described in this material may be combined by the user in a variety of ways for purposes determined solely by the user. No representations are intended or made as to the suitability or engineering balance of the combination of products determined by the user in his selection, nor as to the compliance with regulations or standard practice of such combinations of components or products.

Abrasive Blast Equipment is only a component of the range of equipment used in an abrasive blasting job. Other products may include an air compressor, abrasive, scaffolding, hydraulic work platforms or booms, paint spray equipment, dehumidification equipment, air filters and receivers, lights, ventilation equipment, parts handling equipment, specialized respirators, or equipment that while offered by Clemco may have been supplied by others. Each manufacturer and supplier of the other products used in the abrasive blasting job must be contacted for information, training, instruction and warnings with regard to the proper and safe use of their equipment in the particular application for which the equipment is being used. The information provided by Clemco is intended to provide instruction only on Clemco products. All operators must be trained in the proper, safe, use of this equipment. It is the responsibility of the users to familiarize themselves with, and comply with, all appropriate laws, regulations, and safe practices that apply to the use of these products. Consult with your employer about training programs and materials that are available.

Our company is proud to provide a variety of products to the abrasive blasting industry, and we have confidence that the professionals in our industry will utilize their knowledge and expertise in the safe efficient use of these products.

**GENERAL INSTRUCTIONS**

Described herein are some, **BUT NOT ALL**, of the major requirements for safe and productive use of blast machines, remote control systems, operator respirator assemblies, and related accessories. Completely read **ALL** instruction manuals prior to using equipment.

The user's work environment may include certain **HAZARDS** related to the abrasive blasting operation. Proper protection for the blaster, as well as anyone else that may be **EXPOSED** to the hazards generated by the blasting process, is the responsibility of the user and/or the employer. Operators **MUST** consult with their employer about what hazards may be present in the work environment including, but not limited to, exposure to dust that may contain **TOXIC MATERIALS** due to the presence of silica, cyanide, arsenic or other toxins in the abrasive, or materials present in the surface to be blasted such as lead or heavy metals in coatings. The environment may also include fumes that may be present from adjacent coatings application, contaminated water, engine exhaust, chemicals, and asbestos. The work area may include **PHYSICAL HAZARDS** such as an uneven work surface, poor visibility, excess noise, and electrical hazards. The operator **MUST** consult with his employer on the identification of potential hazards, and the appropriate measures that **MUST** be taken to protect the blaster and others that might be exposed to these hazards.

**ALL** machines, components and accessories **MUST** be installed, tested, operated and maintained only by trained, knowledgeable, experienced users.

**DO NOT** modify or substitute any Clemco parts with other types or brands of equipment. Unauthorized modification and parts substitution on supplied air respirators is a violation of OSHA regulations and voids the NIOSH approval.

**OPERATIONAL INSTRUCTIONS**

**OPERATOR SAFETY EQUIPMENT**

**⚠ WARNING**


- Blast operators and others working in the vicinity of abrasive blasting must always wear properly-maintained, NIOSH-approved, respiratory protection appropriate for the job site hazards.
- **DO NOT USE** abrasives containing more than one percent crystalline (free) silica. Ref. NIOSH Alert #92-102
- Inhalation of toxic dust (crystalline silica, asbestos, lead paint and other toxins) can lead to serious or fatal disease (silicosis, asbestosis, lead or other poisoning).

- ALWAYS wear NIOSH-approved supplied-air respirators as required by OSHA, in the presence of any dust including, but not limited to, handling or loading abrasive; blasting or working in the vicinity of blast jobs; and cleanup of expended abrasive. Prior to removing respirator, an air monitoring

instrument should be used to determine when surrounding atmosphere is clear of dust and safe to breathe.

- NIOSH-approved, supplied-air respirators are to be worn ONLY in atmospheres:
  - NOT IMMEDIATELY dangerous to life or health and,
  - from which a user can escape WITHOUT using the respirator.
- Clemco supplied-air respirators **DO NOT REMOVE OR PROTECT AGAINST CARBON MONOXIDE (CO) OR ANY OTHER TOXIC GAS.** Carbon monoxide and toxic gas removal and/or monitoring device must be used in conjunction with respirator to insure safe breathing air.
- Air supplied to respirator **MUST BE AT LEAST GRADE D QUALITY** as described in Compressed Gas Association Commodity Specification G-7.1, and as specified by OSHA Regulation 1910.139 (d).
- ALWAYS locate compressors to prevent contaminated air (such as CO from engine exhaust) from entering the air intake system. A suitable in-line air purifying sorbent bed and filter or CO Monitor should be installed to assure breathing air quality.
- ALWAYS use a NIOSH-approved breathing air hose to connect an appropriate air filter to the respirator. Use of a non-approved air hose can subject the operator to illness caused by the release of chemical agents used in the manufacture of non-approved breathing air hose.
- ALWAYS check to make sure air filter and respirator system hoses are NOT CONNECTED to in-plant lines that contain nitrogen, acetylene or any other non-breathable gas. NEVER use oxygen with air line respirators. NEVER modify air line connections to accommodate air filter/respirator breathing hose WITHOUT FIRST testing content of the air line. **FAILURE TO TEST THE AIR LINE MAY RESULT IN DEATH TO THE RESPIRATOR USER.**
- Respirator lenses are designed to protect against rebounding abrasive. They do not protect against flying objects, glare, liquids, radiation or high speed heavy materials. Substitute lenses from sources other than the original respirator manufacturer will void NIOSH-approval of this respirator.

**BLAST MACHINES AND REMOTE CONTROLS**

 <b>WARNING</b>
<ul style="list-style-type: none"> <li>• <b>ALWAYS</b> equip abrasive blast machines with remote controls.</li> <li>• <b>Abrasive blast machine operators must wear NIOSH-approved supplied-air respirators (ref: OSHA regulations 1910.94, 1910.132, 1910.139 and 1910.244).</b></li> </ul>

- NEVER modify OR substitute remote control parts. Parts from different manufacturers are NOT compatible with Clemco

equipment. If controls are altered, involuntary activation, which may cause serious injury, can occur.

- Inspect the air control orifice DAILY for cleanliness. NEVER use welding hose in place of twinline control hose. The internal diameter and rubber composition are UNSAFE for remote control use.
- UNLESS OTHERWISE SPECIFIED, maximum working pressure of blast machines and related components MUST NOT exceed National Board approved 125 psig (8.5 BAR).
- NEVER weld on blast machine. Welding may affect dimensional integrity of steel wall and WILL VOID National Board approval.
- Point nozzle ONLY at structure being blasted. High velocity abrasive particles WILL inflict serious injury. Keep unprotected workers OUT of blast area.
- NEVER attempt to manually move blast machine when it contains abrasive. EMPTY machines, up to 6 cu. ft.(270kg) capacity, are designed to be moved:
  - on flat, smooth surfaces by AT LEAST two people;
  - with the Clemco "Mule"; or
  - with other specially designed machine moving devices.
- Larger empty blast machines or ANY blast machine containing abrasive MUST be transported by mechanical lifting equipment.

**AIR HOSE, BLAST HOSE, COUPLINGS, AND NOZZLE HOLDERS**

- Air hose, air hose fittings and connectors at compressors and blast machines MUST be FOUR times the size of the nozzle orifice. Air hose lengths MUST be kept as short as possible AND in a straight line. Inspect DAILY and repair leakage IMMEDIATELY.
- Blast hose inside diameter MUST be THREE to FOUR times the size of the nozzle orifice. AVOID sharp bends that wear out hose rapidly. Use SHORTEST hose lengths possible to reduce pressure loss. Check blast hose DAILY for soft spots. Repair or replace IMMEDIATELY.
- ALWAYS cut loose hose ends square when installing hose couplings and nozzle holders to allow uniform fit of hose to coupling shoulder. NEVER install couplings or nozzle holders that DO NOT provide a TIGHT fit on hose. ALWAYS use manufacturers recommended coupling screws.
- Replace coupling gaskets FREQUENTLY to prevent leakage. Abrasive leakage can result in dangerous coupling failure. ALL gaskets MUST be checked SEVERAL times during a working day for wear, distortion and softness.
- Install safety pins at EVERY coupling connection to prevent accidental disengagement during hose movement.
- ALWAYS attach safety cables at ALL air hose AND blast hose coupling connections. Cables relieve tension on hose and control whipping action in the event of a coupling blow-out.

**MAINTENANCE**

- ALWAYS shut off compressor and depressurize blast machine BEFORE doing ANY maintenance.
- Always check and clean ALL filters, screens and alarm systems when doing any maintenance.
- ALWAYS cage springs BEFORE disassembling valves IF spring-loaded abrasive control valves are used.
- ALWAYS completely follow owner's manual instructions and maintain equipment at RECOMMENDED intervals.

**ADDITIONAL ASSISTANCE**

- Training and Educational Programs. Clemco Industries Corp. offers a booklet, Blast-Off 2, developed to educate personnel on abrasive blast equipment function and surface preparation techniques. Readers will learn safe and productive use of machines, components and various accessories, including selection of abrasive materials for specific surface profiles and degrees of cleanliness.
- The Society for Protective Coatings (SSPC) offers a video training series on protective coatings including one entitled "Surface Preparation." For loan or purchase information, contact SSPC at the address shown below.

**TECHNICAL DATA AND RESEARCH COMMITTEES**

- The following associations offer information, materials and videos relating to abrasive blasting and safe operating practices.

**The Society for Protective Coatings (SSPC)**  
 40 24th Street, Pittsburgh PA 15222-4643  
 Phone: (412) 281-2331 • FAX (412) 281-9992  
 Email: research@sspc.org • Website: www.sspc.org

**National Association of Corrosion Engineers (NACE)**  
 1440 South Creek Drive, Houston TX 77084  
 Phone: (281) 228-6200 • FAX (281) 228-6300  
 Email: msd@mail.nace.org • Website: www.nace.org

**American Society for Testing and Materials (ASTM)**  
 100 Barr Harbor Dr., West Conshohocken, PA 19428  
 Phone (610) 832-9500 • FAX (610) 832-9555  
 Email: service@astm.org • Website: www.astm.org

**NOTICE**

This equipment is not intended to be used in an area that might be considered a hazardous location as described in the National Electric Code NFPA 70 1996, article 500.

**WARRANTY**


The following is in lieu of all warranties express, implied or statutory and in no event shall seller or its agents, successors, nominees or assignees, or either, be liable for special or consequential damage arising out of a breach of warranty. This warranty does not apply to any damage or defect resulting from negligent or improper assembly or use of any item by the buyer or its agent or from alteration or attempted repair by any person other than an authorized agent of seller. All used, repaired, modified or altered items are purchased "as is" and with all faults. In no event shall seller be liable for consequential or incidental damages. The sole and exclusive remedy of buyer for breach of warranty by seller shall be repair or replacement of defective parts or, at seller's option, refund

of the purchase price, as set forth below:

1. Seller makes no warranty with respect to products used other than in accordance hereunder.
2. On products seller manufactures, seller warrants that all products are to be free from defects in workmanship and materials for a period of one year from date of shipment to buyer, but no warranty is made that the products are fit for a particular purpose.
3. On products which seller buys and resells pursuant to this order, seller warrants that the products shall carry the then standard warranties of the manufacturers thereof, a copy of which shall be made available to customer upon request.
4. The use of any sample or model in connection with this order is for illustrative purposes only and is not to be construed as a warranty that the product will conform to the sample or model.
5. Seller makes no warranty that the products are delivered free of the rightful claim of any third party by way of patent infringement or the like.
6. This warranty is conditioned upon seller's receipt within ten (10) days after a buyer's discovery of a defect, of a written notice stating in what specific material respects the product failed to meet this warranty. If such notice is timely given, seller will, at its option, either modify the product or part to correct the defect, replace the product or part with complying products or parts, or refund the amount paid for the defective product, any one of which will constitute the sole liability of seller and a full settlement of all claims. No allowance will be made for alterations or repairs made by other than those authorized by seller without the prior written consent of seller. Buyer shall afford seller prompt and reasonable opportunity to inspect the products for which any claim is made as above stated.

Except as expressly set forth above, all warranties, express, implied or statutory, including implied warranty of merchantability, are hereby disclaimed.

**DAILY SET-UP CHECK LIST**

 <b>WARNING</b>
<ul style="list-style-type: none"> <li>• <b>ALL</b> piping, fittings and hoses <b>MUST</b> be checked DAILY for tightness and leakage.</li> <li>• <b>ALL</b> equipment and components <b>MUST</b> be thoroughly checked for wear.</li> <li>• <b>ALL</b> worn or suspicious parts <b>MUST</b> be replaced.</li> <li>• <b>ALL</b> blast operators <b>MUST</b> be properly trained to operate equipment.</li> <li>• <b>ALL</b> blast operators <b>MUST</b> be properly outfitted with abrasive resistant clothing, safety shoes, leather gloves and ear protection.</li> <li>• <b>BEFORE</b> blasting <b>ALWAYS</b> use the following check list.</li> </ul>

**1. PROPERLY MAINTAINED AIR COMPRESSOR** sized to provide sufficient volume (cfm) for nozzle and other tools PLUS a 50% reserve to allow for nozzle wear. Use large compressor outlet and large air hose (4 times the nozzle orifice size). FOLLOW MANUFACTURERS MAINTENANCE INSTRUCTIONS.

**2. BREATHING AIR COMPRESSOR** (oil-less air pump) capable of providing Grade D Quality air located in a dust free, contaminant free area. If oil-lubricated air compressor is used to supply respirator, it should have high temperature monitor and CO monitor or both. If CO monitor is not used, air **MUST** be tested FREQUENTLY to ensure proper air quality.

**3. Clean, properly maintained NIOSH-APPROVED SUPPLIED-AIR RESPIRATOR.** ALL components should ALWAYS be present. NEVER operate without inner lens in place. Thoroughly inspect ALL components DAILY for cleanliness and wear. ANY substitution of parts voids NIOSH approval i.e. cape, lenses, breathing hose, breathing air supply hose, air control valve, cool air or climate control devices.

**4. OSHA required BREATHING AIR FILTER** for removal of moisture and particulate matter from breathing air supply. THIS DEVICE DOES NOT REMOVE OR DETECT CARBON MONOXIDE (CO). ALWAYS USE CO MONITOR ALARM.

**5. ASME CODED BLAST MACHINE** sized to hold 1/2 hour abrasive supply. ALWAYS ground machine to eliminate static electricity hazard. Examine pop up valve for alignment. Blast machine MUST be fitted with a screen to keep out foreign objects and a cover to prevent entry of moisture overnight.

**6. AIR LINE FILTER** installed AS CLOSE AS POSSIBLE to machine inlet. Sized to match inlet piping or larger air supply line. Clean filter DAILY. Drain OFTEN.

**7. REMOTE CONTROLS** MUST be in PERFECT operating condition. ONLY use APPROVED spare parts, including twin-line hose. DAILY: test system operation and check button bumper and spring action of lever and lever lock. DO NOT USE WELDING HOSE.

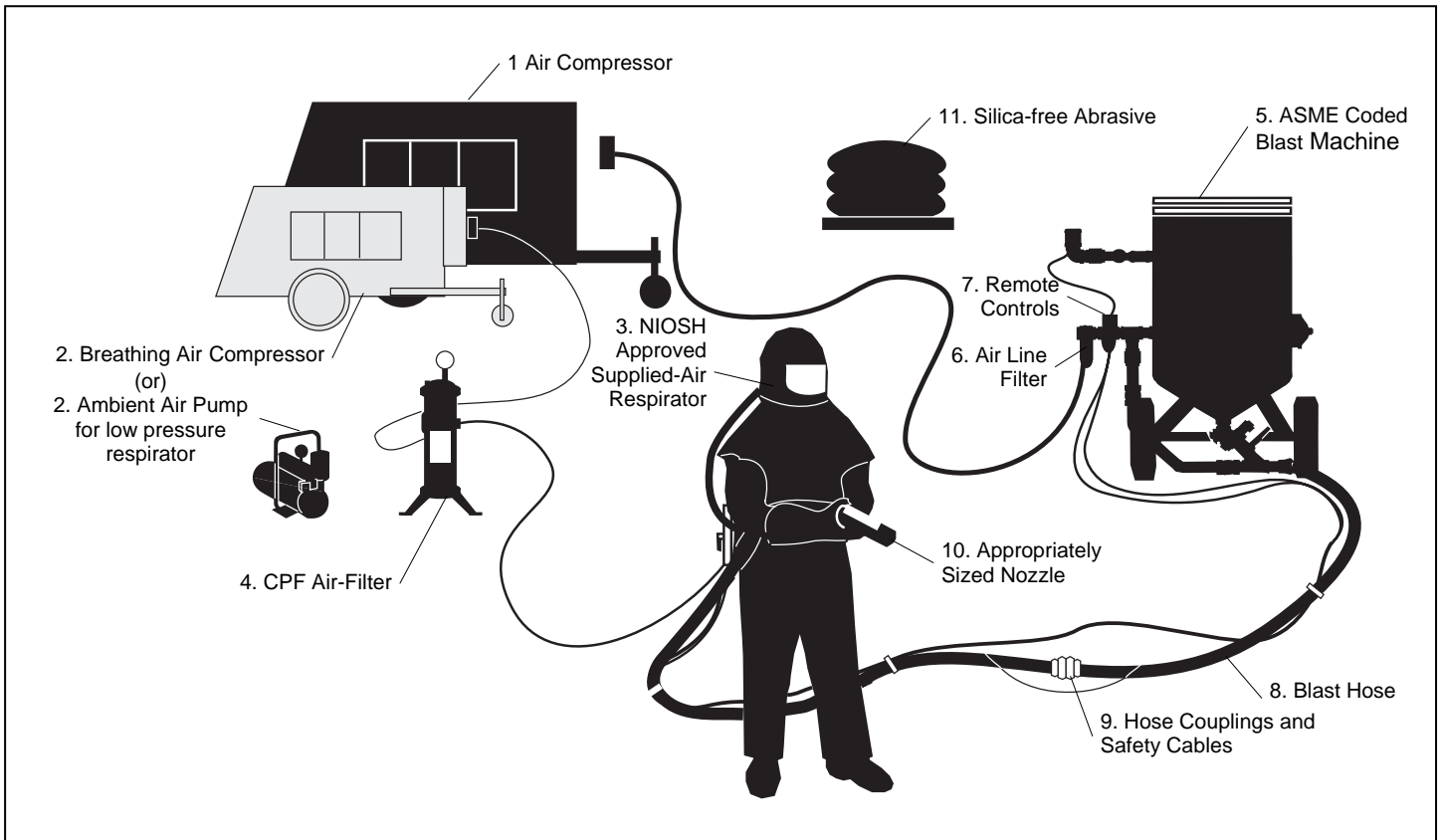
**8. BLAST HOSE** with ID 3 to 4 times the nozzle orifice. Lines MUST be run AS STRAIGHT AS POSSIBLE from machine to work area with NO sharp bends. Check DAILY for internal wear and external damage.

**9. HOSE COUPLINGS, NOZZLE HOLDERS** fitted SNUGLY to hose end and installed using PROPER coupling screws. Coupling lugs MUST be snapped FIRMLY into locking position. Gasket MUST form positive seal with safety pins inserted through pin holes. Check gaskets and replace if ANY sign of wear, softness or distortion. ALWAYS install safety cables at every connection to prevent disengagement. Check nozzle holder for worn threads. NEVER MIX DIFFERENT BRANDS OF COMPONENTS. Check each of these components DAILY.

**10. Inspect NOZZLE and GASKET DAILY** for wear. Replace nozzle when 1/16" larger than original size or if liner appears cracked. Check nozzle threads for wear.

**11. Use abrasive** that is properly sized and free of harmful substances; such as, free silica, cyanide, arsenic or lead. Check material data sheet for presence of toxic or harmful substances.

**12. Test surface** to be blasted for toxic substances. Take appropriate, and NIOSH required, protective measures for operator and bystanders which pertain to substances found on the surface to be blasted.



**1.0 INTRODUCTION**

**1.1** The Spin-Blast HD internal blast tool is designed to blast clean the inside of 18" to 48" ID pipe when using the standard adjustable centering carriage. The tool includes a pneumatic-driven blast head to allow the operator greater flexibility to achieve optimum blast cleaning rates. The tool utilizes two long venturi blast nozzles with orifice size ranging from 1/4" to 1/2".

**1.2 Safety Alerts**

**1.2.1** Clemco uses safety alert signal words, based on ANSI Z535.4-1998, to alert the user of a potentially hazardous situation that may be encountered while operating this equipment. ANSI's definitions of the signal words are as follows:



**This is the safety alert symbol. It is used to alert the user of this equipment of potential personal injury hazards.**

**Obey all safety messages that follow this symbol to avoid possible injury or death.**

---

**CAUTION**

**Caution used without the safety alert symbol indicates a potentially hazardous situation which, if not avoided, may result in property damage.**

---

 **CAUTION**

**Caution indicates a potentially hazardous situation which, if not avoided, may result in minor or moderate injury.**

---

 **WARNING**

**Warning indicates a potentially hazardous situation which, if not avoided, could result in death or serious injury.**

---

 **DANGER**

**Danger indicates an imminently hazardous situation which, if not avoided, will result in death or serious injury.**

---

**2.0 ANCILLARY EQUIPMENT REQUIREMENTS**

**2.1** The HD Spin Blast tool attaches to the end of a pipe lance or blast hose in place of a standard nozzle. The compressor and air supply lines must be sized to support a blast operation at the pressure and cfm shown in Paragraph 3.1.

**2.2** The blast machine should have a minimum of 1-1/4" piping. Minimum size blast hose or pipe lance is as follows:

- 1/4" orifice or 5/16" orifice nozzles  
Use a 1 1/4" I.D. blast hose or lance
- 3/8" and larger orifice nozzles  
Use a 1 1/2" I.D. blast hose or lance

Smaller diameter hose and lance could cause premature wear on the tool.

**2.3** A 20-micron filter is provided on the air motor inlet. An additional 1/2" ID air hose that is as long as the pipe is required to connect to the air motor lead hose. A ball valve or other flow control valve, or pressure regulator should be installed outside the pipe to adjust air motor speed.

**2.4** The air motor exhaust requires a 3/8" ID hose to direct the exhaust air, which contains oils, outside the pipe and away from the newly cleaned blast surface.

**2.5** The Spin-Blast tube has a 2" NPS-M threaded connection for the pipe lance or blast hose. Attach a coupling that is compatible with the lance or blast hose to the tube. Note \* The tool comes with a **Clemco CF-3 Coupling, Stock No. 00555**, which provides a quick connection to a blast hose with standard couplings, or pipe lance.

1-1/4" NPT lance use two \***Clemco CF Couplings, Stock No. 00551**.

1-1/2" NPT lance use two \***Clemco CF-2 Couplings, Stock No. 00553**.

\* The following 1-1/2" full port aluminum couplings are available which offer unrestricted flow through 1-1/2" ID blast hose and pipe lance.

00562, 2" NPT-F ..... attaches to Spin Blast tool

00561, 1-1/2" NPT-F ..... attaches to 1-1/2" lance

00574, 1-1/2" coupling..... for 1-1/2" ID blast hose

**2.6** Provide a level, platform or structural support for the carriage wheels to ride on at the entrance/exit end of the pipe. Do not manually lift the tool out of the pipe while blasting.

---

### **3.0 COMPRESSED AIR REQUIREMENTS**

**3.1** The following table shows cfm consumption at 100 psi (minimum pressure) when nozzles are new and when they are considered worn (1/16" larger than original). The pneumatic drive motor requires a minimum of 50 scfm of dry clean air for proper operation. These requirements are needed to provide proper volume of compressed air to carry blasting abrasive to the blast head. Consult with an air compressor supplier for compressor recommendations.

Nozzle Orifice	New Nozzles	Worn Nozzles
1/4"	220 cfm	325 cfm
5/16"	325 cfm	450 cfm
3/8"	450 cfm	560 cfm
7/16"	560 cfm	730 cfm
1/2"	730 cfm	1150 cfm

---

### **4.0 SET-UP**

---

#### **WARNING**

**Hose disconnection while under pressure could cause serious injury or death. Use safety lock-pins and safety cables on all coupling connections to help prevent hose couplings from accidental disconnection.**

---

- 4.1** Oil the air motor per Paragraph 6-10.
- 4.2** Grease back and front fittings per Paragraphs 6.5 and 6.7.
- 4.2** Mount the tool onto the carriage base with the two (2) bolts provided. The bolts screw into threaded holes in the bottom of the blast tube. Install the carriage legs and adjust the legs so the tool is approximately centered to pipe.
- 4.3** Place the tool inside the pipe and, if needed, make minor final adjustment to center the tool in the pipe. The legs may require cutting or replaced with longer or shorter pipe as required.
- 4.4** Attach an air line (minimum of 1/2" I.D.) to the air motor lead hose.
- 4.5** Connect a 3/8" ID hose from the outlet side of the air motor and long enough to reach outside the pipe.

**4.6** Connect a lance and appropriately sized blast hose between the blast machine and Spin-Blast.

Note: Use  
1-1/2" ID hose coupled with \*00573 aluminum, or 00566 brass couplings.

1-1/4" ID x 2-brd hose with 00570 aluminum, or 00565 brass couplings.

\* Refer to notation in Paragraph 2.5.

---

### **5.0 OPERATION**

**5.1** Connect air lines, blast lines, and blast equipment as described in the applicable operation manuals.

**5.2** Push tool through pipe until blast head exits the opposite end.

**5.3** Open air supply to air motor. Adjust air pressure or flow to rotate the blast head at 40-60 rpm.

---

#### **WARNING**

**Keep hands, fingers, and clothing clear of the sprocket and drive. Serious injury could occur if items are caught in the sprocket.**

---

- 5.4** Pressurize blast machine and adjust abrasive flow to tool.
  - 5.5** Pull tool back through pipe at a constant speed to achieve the desired degree of blast cleanliness.
  - 5.6** As the tool exits the pipe turn off air/abrasive supply from the blast machine. NOTE: Provide an exit ramp, platform or structural support at the exit end of the pipe.
  - 5.7** Turn off air supply to the air motor.
- 
- 6.0 MAINTENANCE, Refer to Figure 1**
  - 6.1** Clean and inspect the tool after each shift (8-10 hrs).
  - 6.2** Remove blast head assembly (Item 1).
  - 6.3** Remove gasket packing gland (Item 5).

- 
- 6.4** Clean abrasive from tool body and blast head.
- 6.5** Add grease to back grease fitting until grease protrudes from seal gland (Item 6).
- 6.6** Install gasket packing gland (Item-5) onto tube (Item 14).
- 6.7** Add grease to front grease fitting until grease protrudes from gasket packing gland (Item 5).
- 6.8** Install blast head hand tight; do not over tighten.
- 6.9** Tighten lock ring (Item 2) to secure the head.
- 6.10** Before and after each use, and in a clean environment, clean dust and abrasive for around air filter's swivel connector, and remove the air filter and lead hose from the inlet fitting on the air motor. Add 2 or 3 drops of 10-wt non-detergent oil to the air motor inlet port. To prevent particle contamination, replace the filtered lead hose when done.
- 

## CAUTION

**Take special care to prevent any contaminant from entering the air motor or air motor supply hose. Any dust or abrasive in the air supply, and entering the air motor will cause the air motor to fail.**

---

- 6.11** Attach an air line to the air motor lead hose. Open the air valve to air motor and adjust to desired rotating speed. NOTE: If tool does not spin properly, disassemble tool and inspect o-rings and seal on seal gland (Item 9).
- 

## 7.0 ASSEMBLY

- 7.1** Press bearing (Item 11) to the back lip on the machined side of the tube (Item 14).
- 7.2** Install lock ring (Item 10) to hold bearing in position.
- 7.3** Install spacer sleeve (Item 12) over the blast tube and against the bearing.
- 7.4** Press bearing (Item 11) to set against spacer sleeve.

- 7.5** Install lock ring (Item 10) in groove next to bearing.

- 7.6** Install seal gland (Item 6) with seal (Item 7), 2 inner o-rings (Item 9) and 2 outer o-rings (Item 8) over tube. The seal must be installed facing the blast head. Lubricate o-rings and seal liberally.

- 7.7** Slide main body (Item 13), chain side first, over the threaded end of the tube (item 14) until it seats against the bearing (Item 11).

NOTE: Check seal gland (Item 9) and press it in to seat against the bearing.

- 7.8** Apply grease to the end of the blast tube (item 14) and install the gasket packing gland (Item 5).

- 7.9** Install main body bushing (Item 3) hand-tight. Using a spanner tighten the body bushing an additional 1/4 turn and lock in place with the bushing lock ring (Item 4).

- 7.10** Install blast head (Item 1) hand tighten against gasket packing gland (Item 5). Lock in place with lock ring (Item 2).

- 7.11** Using mounting blocks (Item 17), Install the air motor (Item 15) onto tube (Item 14). Rotate the air motor to adjust the sprocket height to engage the drive chain.

- 7.12.** Install the carriage to tube with the two (2) bolts provided.
-



**8.0 PARTS LIST**

**8.1 Spin-Blast HD Assembly, Figure 1**

Item	Description	Stock No.
(-)	Spin-Blast HD, tool with carriage .....	25070
(-)	Spin-Blast HD, tool without carriage .....	25129
1.	Blast head .....	25100
2.	Lock ring, blast head .....	25101
3.	Bushing, main body .....	25102
4.	Lock ring, bushing .....	25103
5.	Packing gasket, gland, each, 3-required..	25104
6.	Seal gland .....	25105
7.	Seal .....	25106
8.	O-ring, gland, outer, set of 2 .....	25107
9.	O-ring, gland, inner, set of 2.....	25108
10.	Lock ring, each 2-required .....	25109
11.	Bearing, set of 2 .....	25110
12.	Spacer sleeve .....	25111
13.	Body .....	25112
14.	Tube .....	25113

15.	Air motor assembly with gear .....	25114
16.	Coupling, CF-3, 2" FNPT .....	00555
17.	Mounts, air motor, set.....	25116
18.	Nozzle, each, 2- required	
	TSP-4, 1/4" orifice nozzle .....	23514
	TSP-5, 5/16" orifice nozzle .....	23515
	TSP-6, 3/8" orifice nozzle .....	23516
	TSP-7, 7/16" orifice nozzle .....	23517
	TSP-8, 1/2" orifice nozzle .....	23518
19.	Carriage assembly .....	25117
20.	Elbow, 1/4" brass st. ....	02027
21.	Adaptor, 1/4" NPT x 3/8" male SAE .....	(*)
22.	Adaptor, 1/4" NPT x 3/8" fem. SAE .....	(*)
23.	Filter, 1/4" NPT .....	(*)
24.	Extension, nozzle, pair .....	25118
25.	Spanner .....	(*)
26.	Nylon guard, gear .....	(*)
27.	Gasket, CQG, Pack of 10 .....	00850
28.	Lock pins, Pack of 25 .....	11203
(-)	Service kit, air motor and gear .....	25130
(*)	Stock number or ordering information available on request	

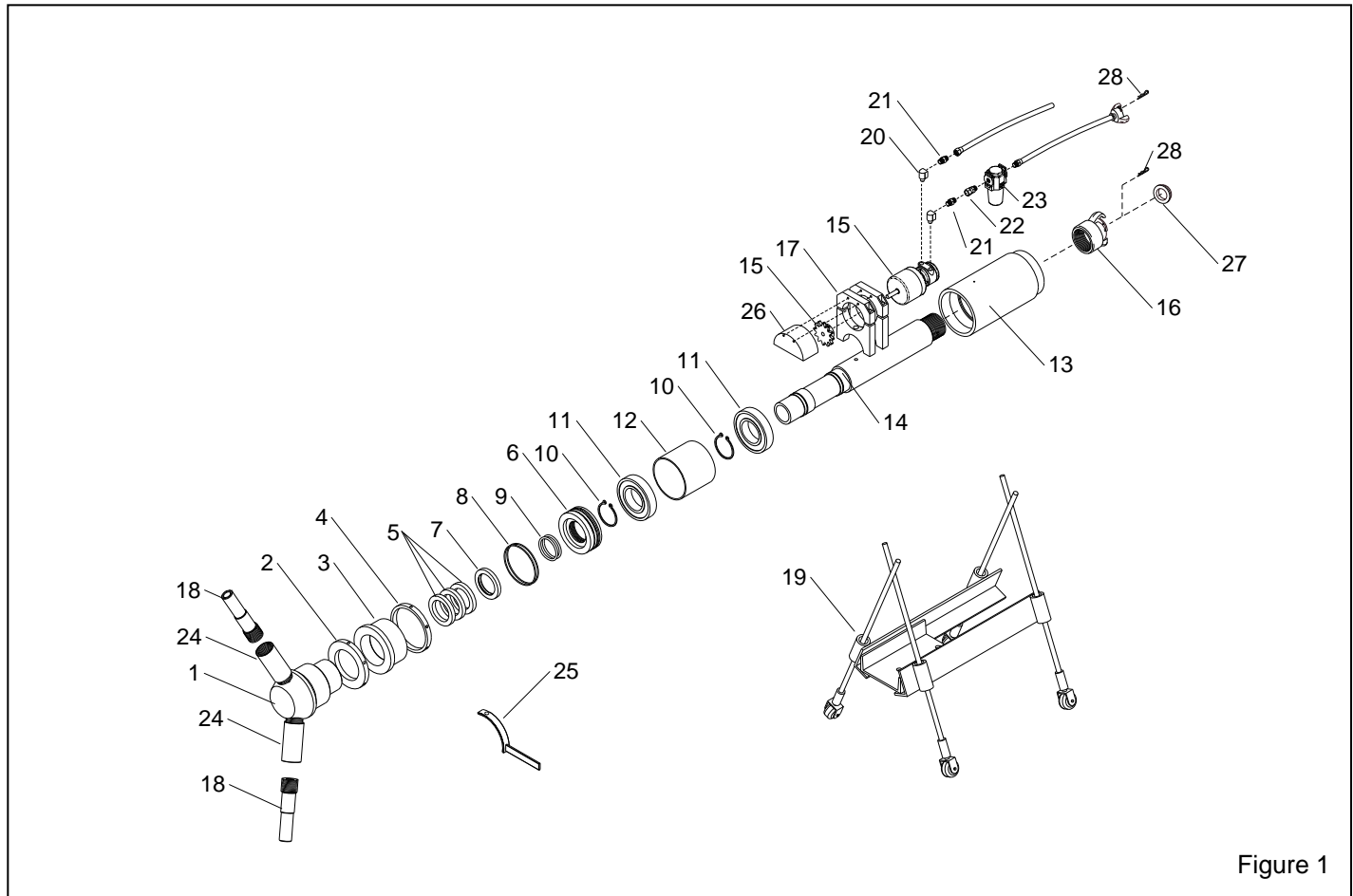


Figure 1