

BLAST ROOM ENCLOSURE SOLUTIONS



Productivity. Safety. Performance.



PRODUCTIVITY

1. Minimize Downtime

- Blast when you need to, don't wait for the weather.
- Contains media for easier clean-up when you need it.
- Keeps blast process in one area so you're ready to blast at the push of a button.

2. See the Result

- **LED lights** for high visibility to ensure consistent blasting and full coverage.
- Designed for optimal cross flow ventilation for maximum visibility while blasting.



SAFETY

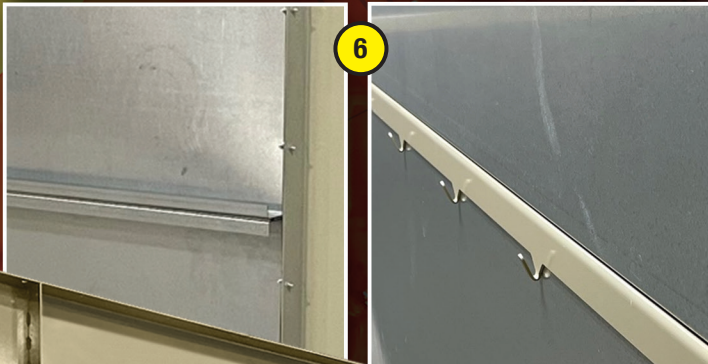
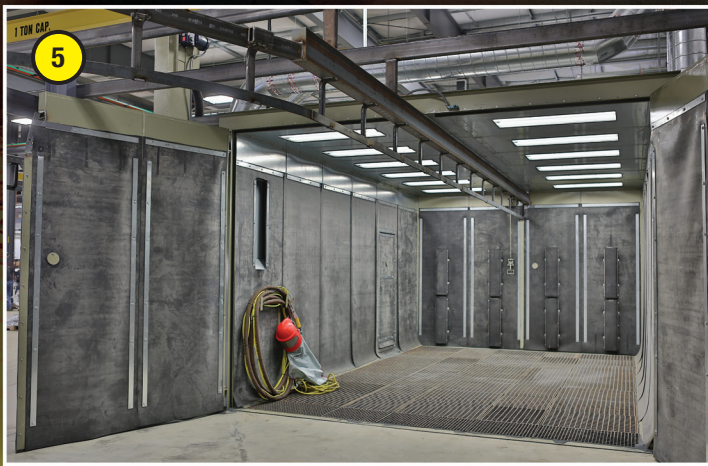
3. Meet Safety Standards

- Door Interlocks standard on all man doors and work doors to enable OSHA compliance.
- Room is designed for airflow to comply with ANSI Z9.4 Ventilation Rates.

4. Keep Employees Safe

- Dedicated blast space so other employees are not exposed to stray blast, ricochet, or other hazards.
- Keeps dust in the blast room and out of the rest of production, particularly important when removing hazardous materials or coatings from workpieces.





PERFORMANCE

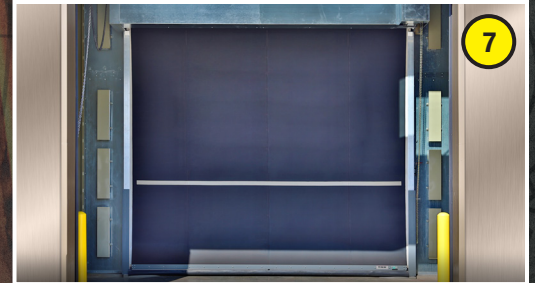
5. Built To Last

- Galvanized steel wall panels for long lasting performance, available in 10ga or 16 ga to fit any applications needs.
- Easily **replaceable rubber curtains** to protect side walls from overspray and ricochet.

6. Easy to install & Use

- No welding required for install – Quickly bolt pieces together.
- Also available with **VHB tape** on select applications for a quicker install with reduced bolt assembly and reduced seam caulking.
- Dedicated hose pass-throughs and **equipment hooks** for efficient operations.
- Heavy duty, swing out work doors for easy work piece entry and a quality seal.

SPECIFICATIONS



- 10ga rooms any size.
- 16ga rooms up to 24'Wx24'H, any length.
- *Optional:* Rubber curtains, but recommended especially in aggressive media applications.
- *Optional:* Bi-fold doors, **rubber roll-up doors (7)**.
- *Optional:* Monorails, **man-lifts (8)** and other part handling solutions.



BLAST ROOM ENCLOSURE SOLUTIONS

CLEMCO[®]
INDUSTRIES CORP.

©2023 Clemco Industries Corp.
One Cable Car Drive • Washington, MO 63090 • Phone: 636.239.4300 • Fax: 800.726.7559
www.clemcoindustries.com

